



VERI-Q Hb Mate

Hemoglobin Monitoring System (Hemoglobin, Hematocrit)



Direct Bleeding & No Pipette

fast and easy blood absorption



Fast test time

Measurement result in 2 seconds



Excellent accuracy

Optical method



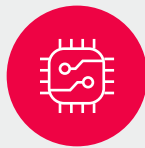
Small blood sample

4~7µL small amount of blood



Wide measurement range

0~27g/dL measurement range



Large memory

save 1,000 Test Result

Specification

- **Size** 65 x 117.43 x 20.5(mm)
- **Detection method** Optical method
- **Blood Sample** Fresh capillary whole blood
- **Sample Volume** 4 ~ 7 µL
- **Measurement Range** 0 ~ 27 g/dL
- **Test Time** 2 seconds
- **CV** ≤ 3%
- **Power** 1.5 V AAA × 3
- **Battery Life** more than 1000 tests
- **Memory** 1,000 test results (include data and time)
- **Operating Temp.** 50~104°F (10~40°C)
- **Operating Humidity** 10~90% RH

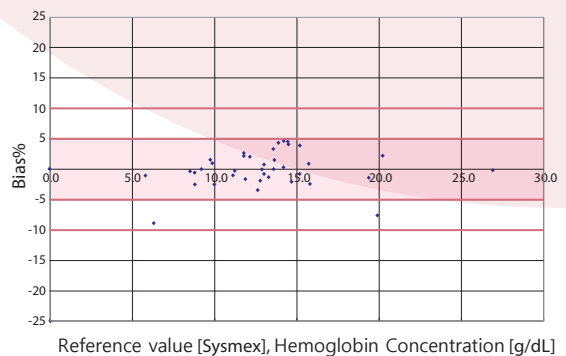
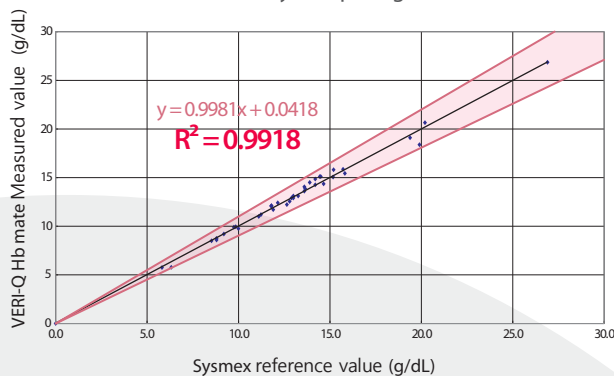
Measurement Result Reference

Year		Normal Range (g/dL)	Normal Range (g/L)
0.5 ~ 2		11.0 ~ 14.0	110.0 ~ 140.0
2 ~ 5		11.0 ~ 14.0	110.0 ~ 140.0
5 ~ 9		11.5 ~ 14.5	115.0 ~ 145.0
9 ~ 12		12.0 ~ 15.0	120.0 ~ 150.0
12 ~ 14	Male	12.0 ~ 16.0	120.0 ~ 160.0
	Female	11.5 ~ 15.0	115.0 ~ 150.0
15 ~ 17	Male	11.7 ~ 16.6	117.0 ~ 166.0
	Female	11.7 ~ 15.3	117.0 ~ 153.0
18 ~ 44	Male	13.2 ~ 17.3	132.0 ~ 173.0
	Female	11.7 ~ 15.5	117.0 ~ 155.0
45 ~ 64	Male	13.1 ~ 17.2	131.0 ~ 172.0
	Female	11.7 ~ 16.0	117.0 ~ 160.0
65 ~ 74	Male	12.6 ~ 17.4	126.0 ~ 174.0
	Female	11.7 ~ 16.1	117.0 ~ 161.0

- VERI-Q Hb Mate is for monitoring total hemoglobin levels, not for diagnostic use.
- Please refer to the target hemoglobin range appropriate for your condition as advised by your healthcare professional.
- You should consult your doctor before making any changes to your medication based on your measurement results.

Accuracy Test

Results of a clinical study comparing VERI-Q Hb Mate and Sysmex



Regression analysis results for hemoglobin test accuracy

Linear regression	R ²	N	Sample Range [g/dL]
y = 0.9981x + 0.0418	R² = 0.9918	40	0.0 to 26.9

System accuracy results hemoglobin test

within ± 5%	within ± 10%
38/40 (95.0%)	40/40 (100%)

* Accuracy test was performed in accordance with the CLSI EP09-A2 specification.

Precision Test

This test was repeated with three varying concentrations of hemoglobin whole blood.

Lot	Sample Description	Unit (g/dL)	Repeatability		Within-Laboratory Precision	
			SD	% CV	SD	% CV
1	Low	10.15	0.23	2.28	0.24	2.38
	Middle	15.15	0.26	1.71	0.28	1.84
	High	20.25	0.25	1.24	0.27	1.34
2	Low	10.15	0.14	1.39	0.18	1.78
	Middle	15.15	0.24	1.58	0.26	1.71
	High	20.25	0.3	1.49	0.34	1.68
3	Low	10.15	0.14	1.39	0.15	1.49
	Middle	15.15	0.25	1.64	0.25	1.64
	High	20.25	0.25	1.24	0.29	1.44

* The precision test was performed in accordance with the CLSI EP05-A3 single-site specification.